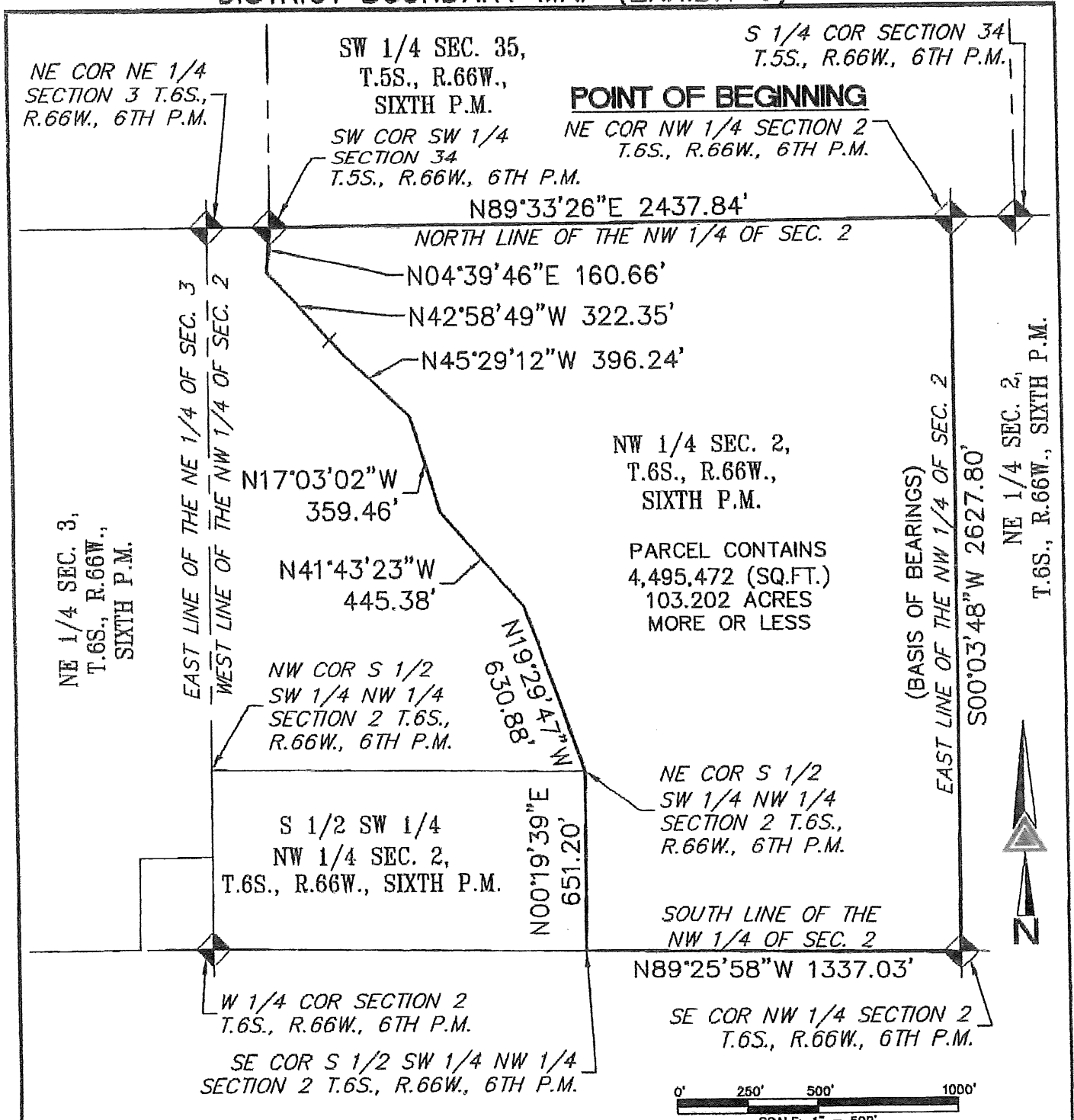


DISTRICT BOUNDARY MAP (EXHIBIT C)



NOTE: THIS DRAWING DOES NOT REPRESENT A MONUMENTED LAND SURVEY AND IS ONLY INTENDED TO DEPICT THE ATTACHED LEGAL DESCRIPTION.

PATH:
 DWG NAME: DISTRICT BOUNDARY.DWG
 DWG: BAM CHK: DGR
 DATE: 2021-06-02
 SCALE: 1" = 500'

AZTEC
CONSULTANTS, INC.

310 East Mineral Ave,
 Suite 1
 Littleton, Colorado 80122
 Phone: (303)713-1898
 Fax: (303)713-1897
 www.aztecconsultants.com

Q: 62321-01 - OVERLOOK AT KINGS POINT PLAT\DWG\EXHIBITS\

DISTRICT BOUNDARY
 NW 1/4 SEC. 2, T.6S., R.66W., 6TH P.M.
 DOUGLAS COUNTY, COLORADO

JOB NUMBER 62321-01 2 OF 2 SHEETS